

Welcome to CIDE



What is CIDE?

The Centro de Investigación y Docencia Económicas, A.C,
or [Center for Research and Teaching in Economics](#)

is both a research and teaching centre. Despite its name, its work deals with law and a range of social science fields, including public policy, history, political science, international relations and, of course, economics.



CIDE is part of a network of research centers operating under the aegis of Mexico's National Council of Humanities, Sciences and Technologies (CONAHCYT).

All our graduate programs are recognized by the National System of Quality Postgraduate Programs (SNPC) and our undergraduate programs are among the highest-ranked in the country.

The vast majority of our faculty are members of the National System of Researchers (SNI).



Campuses



Santa Fe (Mexico City)
Establish 1974



Región Centro (Aguascalientes)
Established 2011



TAUGHT PROGRAMS

Doctorates

- Public policy (DPP)
- Political science (DCP)
- Applied history (DHA)

Masters

- Economics (ME)
- Public policy and administration (MAPP)
- International history (MHI)
- Political science (MCP)
- **Methods for Public Policy Analysis (METPOL)**

Undergraduate

- Economics
- Political science and international relations
- Legal studies
- **Public policy**

Continuing education

- Postgraduate certificates
- Methodology courses
- Specialized courses



The Learning Context

Merit and high academic standards

CIDE offers rigorous, academically-demanding programs and entry is highly competitive. All students, regardless of background, are motivated learners, and classes are small; this makes for enriching discussion and debate in and out of class.

Social Mobility and Diversity

As a public institution, CIDE has a strong commitment to supporting learners of diverse backgrounds. Given its solid reputation, CIDE attracts students from throughout Mexico and much of Latin America. Because of the quality of CIDE's graduate programs, all of these are part of the National Posgraduate System SNP, so the vast majority of graduate students receive funding from CONAHCYT.

CIDE also strives to provide institutionally-funded scholarships for undergraduate students who would not otherwise have access. The institution also supports academic skills development through courses and tutoring in mathematics, Spanish-language writing, and English for academic purposes.

These factors mean that the students you will meet at CIDE offer different perspectives and insights into the Mexican context.

Current international and exchange students

Full-time students

- Argentina
- Belgium
- Brazil
- Chile
- Colombia
- Costa Rica
- Cuba
- Honduras
- Italy
- Japan
- Peru
- Venezuela
- United Kingdom
- USA

Exchange students (2019-2024)

- Argentina
- France
- Mexico
- Peru
- South Korea
- Sweden
- United States
- Colombia
- Germany
- Spain

What makes studying at CIDE different?

- Small classes
- Challenging academic environment
- Close interaction with faculty*
- Diverse student body
- Specialized centres on campus
- Links to national, regional, and international research networks
- Sense of community



*All CIDE faculty members are actively involved in academic research. To further the real-world impact of such investigation, many also do applied consulting work or maintain an active presence in the news media.

RESEARCH CENTER

AREAS



Because of its strong academic and applied research programs, CIDE is often described as a “Think Tank”

- [Economics](#)
- [Public policy and administration](#)
- [International studies](#)
- [Political science](#)
- [History](#)
- [Legal studies](#)
- [Development studies](#)
- [Multidisciplinary Studies](#)

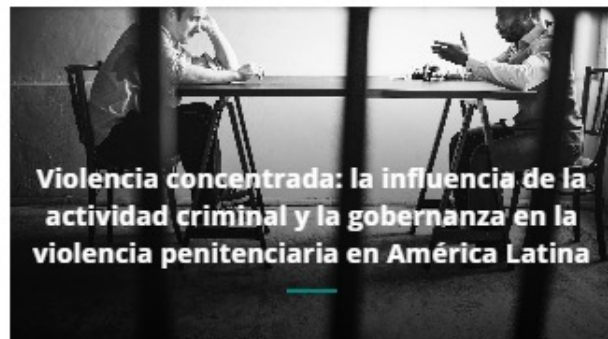
Social science applied to analysing and addressing key national and regional issues.

Follow us

follow us



ÚLTIMAS PUBLICACIONES



<https://www.cide.edu/blogs/>



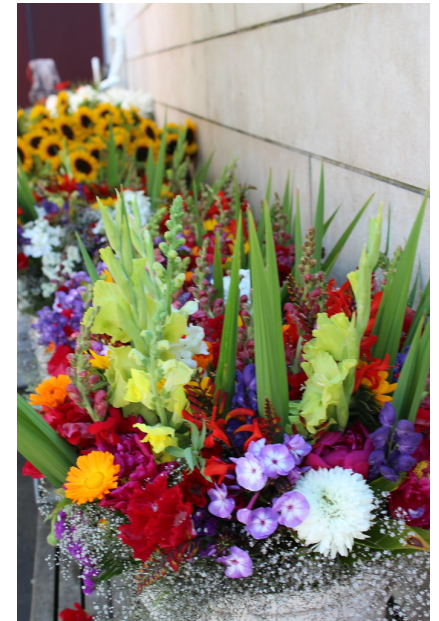
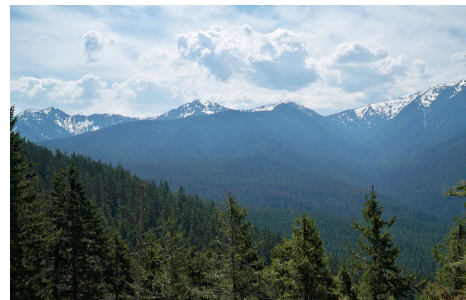
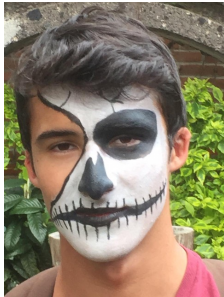
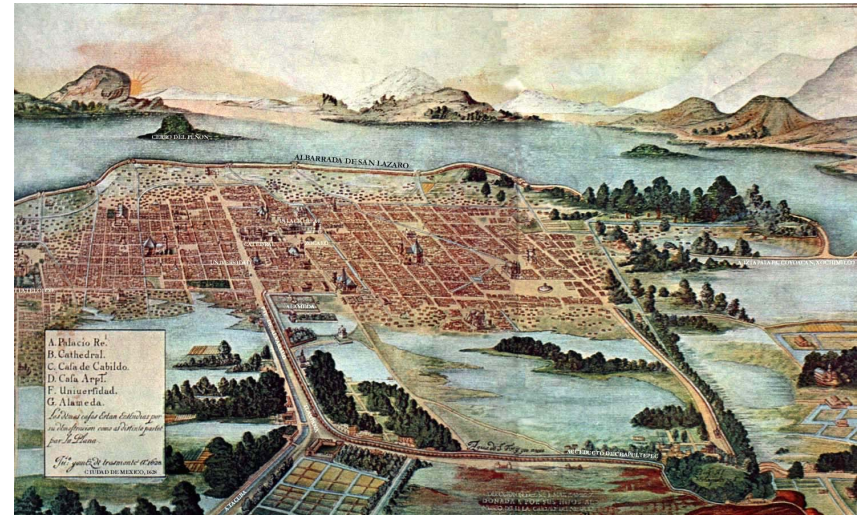
La gran ciudad: Mexico City

- Culture (150+ museums and extensive live entertainment)
- History and modernity intertwined
- Diversity
- Extensive public transit
- Low cost of living by international standards
- Pleasant, temperate climate (no snow!)
- Vibrant nightlife
- Great food
- Friendly people



GOBIERNO DE LA
CIUDAD DE MÉXICO

SECRETARÍA
DE TURISMO



Student mobility opportunities



Undergraduate and graduate students

Length of stay

one-semester or full-year (August to June)
exchanges

- Fall: mid-August through mid-December
- Spring: late January through mid-June

Flexible course selection

If they meet academic prerequisites, *incoming exchange students may take courses from any program.*

Language support courses

Spanish as a foreign language
(academic credit)

Academic writing in Spanish
(undergraduate, academic credit)

English for academic purposes
courses (non credit)

Faculty: opportunities for collaboration



visiting professors

external fellowships/research stays

research collaboration

For further
information contact:

**The Office
of Internationalization (OIE) at
CIDE**

Mailing address:

Carretera México-Toluca 3655

Col. Lomas de Santa Fe

CP 10200

CDMX, México

Phone: +52 (55) 35727-9800 ext.
2833 or 2805

Brenda E. VALDÉS CORONA

*Coordinator, Educational
Internationalization*

brenda.valdes@cide.edu

Jazmín VELÁZQUEZ MARTÍNEZ

Student Mobility Officer

jazmin.velazquez@cide.edu